

Version Number:XES202510001

Third edition of 2025, all data in this brochure are updated to June 30, 2025

Disclaimer:

If the data, parameters and other information are changed, the latest information shall prevail without prior notice



Xinyi Electric Storage

Complete Range of Energy Storage
System Solutions and Products



Scan the QR code
for more details

Xinyi Electric Storage Holdings Limited (08328.HK)

Office Address: Xinyi R&D Center, NO.23, Wuyishan Rd., ETDZ,
Wuhu, Anhui Province, China

Factory Address: No. 99 Huarun Rd., Jianshe Village, Jinfeng
Town, Zhangjiagang, Jiangsu Province, China

About Xinyi Group

The Xinyi Group, which was founded in 1988 and headquartered in Hong Kong, owns four listed companies: Xinyi Glass (00868.HK), the world's leading integrated glass manufacturer; Xinyi Solar (00968.HK), the world's leading photovoltaic (PV) glass manufacturer and PV power plant developer and constructor; Xinyi Electric Storage (08328.HK), the leading integrated new energy solutions provider; Xinyi Energy (03868.HK), the leading PV power plant operator in China.

The products and business of the group include the high-quality float glass, automotive glass, building energy-saving glass, photovoltaic glass, new energy power plants, photovoltaic film, lithium batteries, household and industrial/commercial energy storage systems, PV power plant EPC and EMC business, and polysilicon industry.

As at the end of December 2024, the number of employees exceeded 26,000, the Group's total assets exceeded HK\$130 billion, and its sales network covers more than 140 countries and regions around the world.

26000+
Number of employees

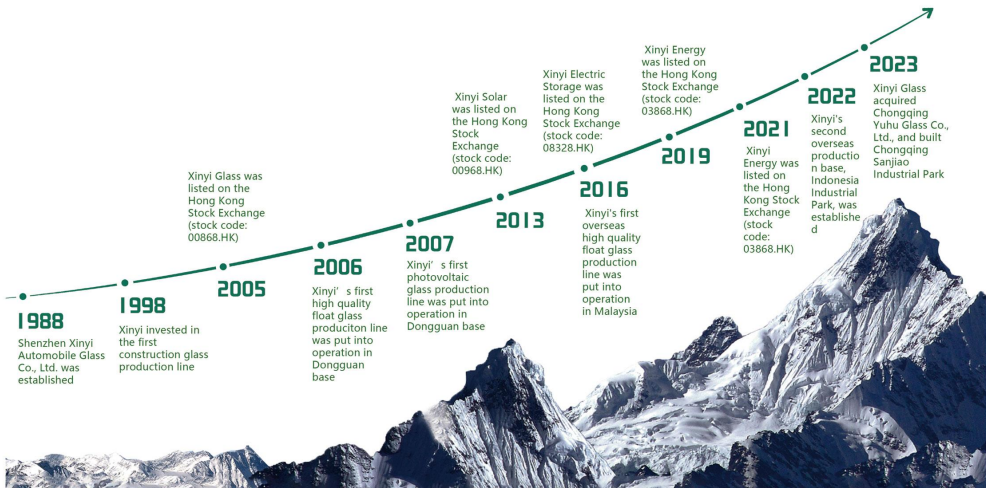
130+ Billion HK\$
Group total assets

4
Listed Companies

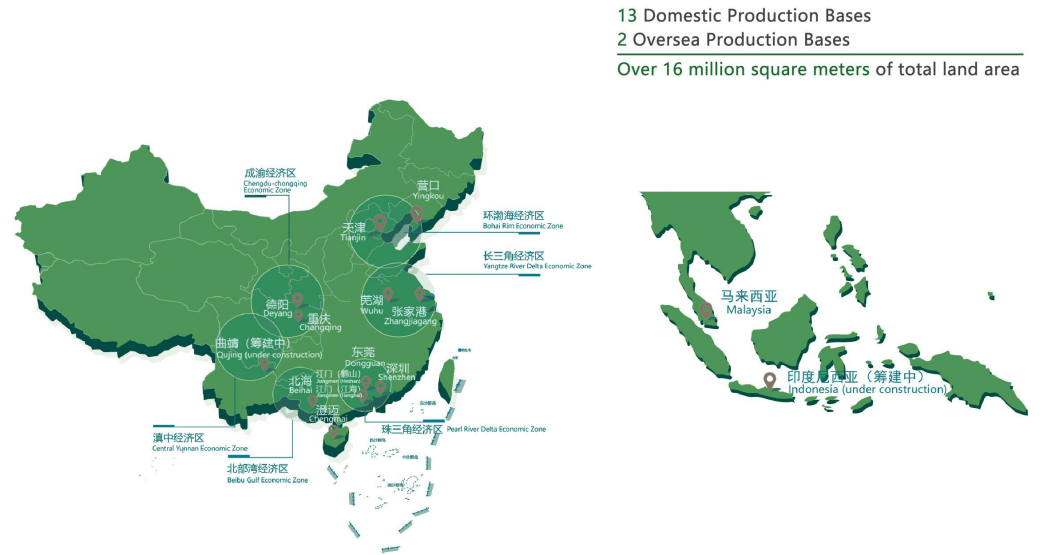
140+
Sales network (countries and regions)

15
Production bases (13 domestic, 2 overseas)

Xinyi Group Development History



Xinyi Group Global Layout



Xinyi Electric Storage Products and Services

Xinyi Electric Storage Holdings Limited (hereinafter referred to as "Xinyi Electric Storage") is one of the 4 listed companies of Xinyi Group. The company has production bases in Zhangjiagang, Jiangsu province, Wuhu, Anhui province, and Malaysia, as well as branches in Canada, Shenzhen, China, Xian, China, and Indonesia. We have registered the trademark "EYES" in China (including Hong Kong) and the trademark "PION POWER" overseas. The company is striving to become a global leader in the energy storage industry!

Industrial & Commercial Energy Storage System



Residential Energy Storage System



Distributed Rooftop PV Power Plant



PV film



Electric forklift

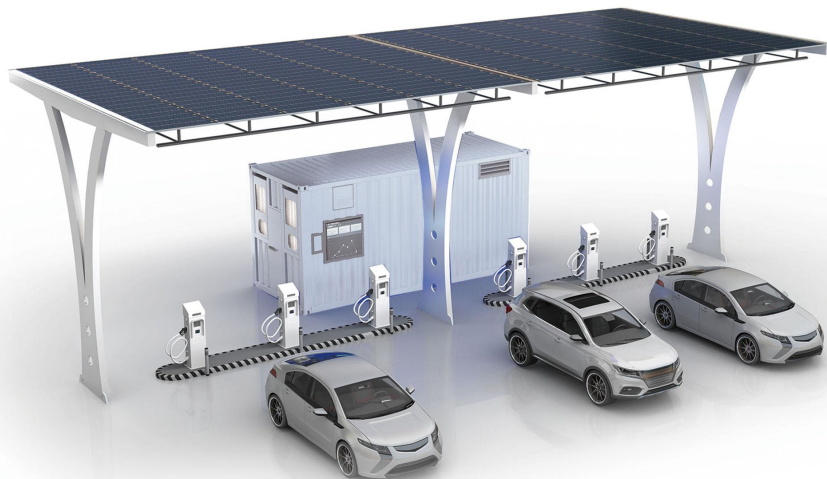


Utility-scale Energy Storage Solutions



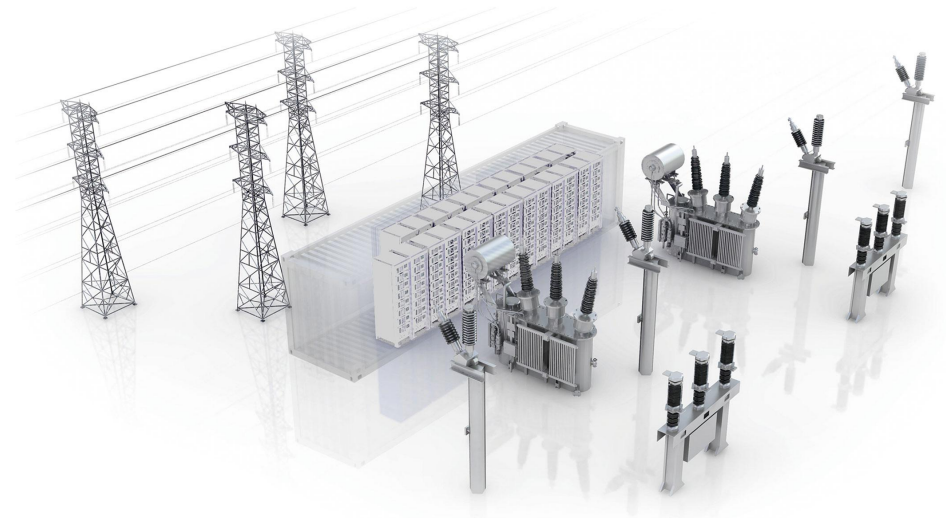
Energy Storage on Power Transmission and Distribution

To modulate frequency and timely peak according to the power grid load, adopting more renewable energy in power transmission and distribution side, and guaranteeing the safe, stable, efficient and low-cost operation of the grid.



Energy Storage on Power Generation

To optimize the power output curve, reduce solar and wind curtailment, provide system inertia and the functions of frequency and peak modulation, increase the proportion of renewable energy in total power generation, and optimize the energy structure.



Energy Storage on Power Consumption

To stable power quality management, and expand to emerging scenarios such as UPS power backup, island microgrids, smart charging station for PV & Energy Storage System & EV Charger and etc. Reducing the social cost of electricity and improving the security of electricity on the user side.

Utility-scale Energy Storage Solutions

Customizable

Air Cooling Energy Storage System



**Air Cooling
Battery Pack**

Basic Parameter	
Model	XES-L280-01P016S
Battery Type	LFP,3.2V,280Ah
Specification	51.2V/280Ah
Configuration	1P16S
Rated Voltage (V)	14.3
Rated Energy (kWh)	51.2
Rate	0.5P
Cycle Life(25°C,70%SOH)	≥6000次
Cooling Method	Air Cooling
Dimension(W*H*D)mm	480×235×771
Weight (kg)	116
Module Standard	GB/T 36276, GB/T 34131



**All-in-One
Air Cooling Outdoor Cabinet**

Basic Parameter	
Model	XES-215FB
Battery Type	LFP,3.2V/280Ah
DC Side Rated Voltage (V)	768
Rated Energy (kWh)	215
Configuration	(1P16S) 15S
Cycle Life(25°C,70%SOH)	≥6000 times
Nominal Output Voltage (Vac)	380/400 (-15%~15%)
Max. Output Power (kW)	110
Enclosure	IP54
Dimension(W*D*H)mm	1510×2450×1180
Weight (t)	<3
Protocol	Modbus TCP/RTU, CAN2.0, IEC61850



Air Cooling Energy Storage System

Basic Parameter		
Model	XES-5018FB	XES-5505FB
Specification (ft)	45	50
Battery Type	LFP,3.2V/280Ah	
Cluster	14	16
Rated Energy (kWh)	5018	5505
Rated Voltage (V)	1280	1229
Output Voltage Range (V)	1080~1460	1036~1401
Rate	0.5P	
Cycle Life(25°C,70%SOH)	≥6000 times	≥6000 times
Dimension(W*H*D)mm	13716×3100×2438	15245×3100×2438
Weight (t)	≤60	≤70
Storage Temperature Range	-20°C ~ 45°C	
Operating Temperature Range	-30°C ~ 60°C	
Enclosure	IP54	
Protocol	Modbus TCP/IP, CAN, IEC 61850	

Utility-scale Energy Storage Solutions

Customizable

Liquid Cooling Energy Storage System



Liquid Cooling Battery Pack

Basic Parameter		
Model	XES-L280-01P052S	XES-L314-01P052S
Battery Type	LFP,3.2V/280Ah	LFP,3.2V/314Ah
Specification	166.4V/280Ah	166.4V/314Ah
Configuration	1P52S	
Rated Energy (kWh)	46.6	52.2
Rated Voltage (V)	166.4	
Output Voltage Range (V)	130 ~ 189.8	
Rate	0.5P	
Cycle Life(25°C,70%SOH)	6000 times	≥7000 times
Dimension(W*H*D)mm	1140×780×250	
Weight (kg)	330	348
Enclosure	IP67	



All-in-One Liquid Cooling Outdoor Cabinet

Basic Parameter		
Model	XES-233YB	XES-261YB
Battery Type	LFP,3.2V/280Ah	LFP,3.2V/314Ah
Configuration	(1P52S) 5S	
Rated Energy (kWh)	233	261
Rated Voltage (V)	832	
Output Voltage Range (V)	702 ~ 949	
Rate	0.5P	
Cycle Life(25°C,70%SOH)	≥6000 times	
Dimension(W*H*D)mm	1300×2200×1300	
Weight (t)	3	
Storage Temperature Range	-20°C ~ 45°C	
Operating Temperature Range	-30°C ~ 60°C (> 50°C Derating Operation)	
Enclosure	IP67(PACK),IP54(Container)	
Protocol	Modbus TCP/RTU, CAN2.0, IEC61850	



Liquid Cooling Energy Storage System

Basic Parameter		
Model No	XES-4472YB	XES-5016YB
Container Size (ft)	20	
Battery Type	LFP,3.2V 280Ah	LFP,3.2V/314Ah
Cluster	12	
Rated Energy (kWh)	4472	5016
Rated Voltage (V)	1331	
Output Voltage Range (V)	1123.2~1497.6	
Rate	0.5P	
Cycle Life(25°C,70%SOH)	≥6000 times	
Heat Management Method	Liquid Cooling	
Fire Suppression System	Pack level Detection Fire extinguishers (Perfluorohexone) + Water mist systems	
Dimension(W*H*D)mm	6058×2600×2896	
Weight (t)	≤44	≤45
Storage Temperature Range	-20°C ~ 45°C	
Operating Temperature Range	-30°C ~ 55°C	
Enclosure	IP67(PACK),IP54(Container)	
Protocol	Modbus TCP/IP, CAN, IEC 61850	

Utility-scale Energy Storage Solutions

50KW/100kWh

All-in-One Outdoor ESS Cabinet



XES-50/100-FB-G1

Basic Parameter

Model No.	XES-50/100-FB-G1
Battery Side DC Voltage Range	280V~408.8V
Nominal Voltage	358.4V
Pack Configuration	1P112S(7*16)
Cycle Life	≥6000
Cooling Method	Air Cooling
Fire Suppression Method	Cabin-grade Aerosol
Maximum PV Input Power	100KW
Maximum PV Input Voltage	1000V
Operating Temperature	-20°C~55°C
Protection Rating	IP54
Altitude	2000m(>2000m Derating)
Dimensions (W*H*D)	1223+1367*2179mm
Weight	1510kg
Communication Method	CAN/RS485

ETANK-5S Integrated

Liquid Cooling Outdoor ESS Cabinet



XES-261YB(5S)-06-07-CE

Basic Parameter

Model No.	XES-261YB (5S) -06-07-CE
Cell	LFP 314Ah
Rated Voltage	832V
DC Voltage Range	650~949V
Charge/Discharge Rate	0.5C
Weight	≈2500kg
Protection Rating	IP54
Cycle Life	8000次/70%EOL
System Efficiency	≥90%
Fire Protection System	Triple Fire Protection: PACK-level flooding + Cabin aerosol + Water firefighting
Operating Temperature	-20°C~55°C
Dimensions (W*D*H)	980*1330*2251.5(mm)
Communication Interface	RS485、CAN、LAN
Noise Level	≤70dB

Utility-scale Energy Storage Solutions

ESS Application Cases



Energy Storage Power Station of CR Power in Caofeidian

Capacity:30MW/60MWh
Function:Modulating Peak and Frequency,Smoothing Output



Energy Storage Project in Henggang Shenzhen

Capacity:7MW/14MWh
Function:Peak-shaving and Valley-filling, Solar Energy Storage+Charging



Independent(Shared) Energy Storage Power Station in Anlu,Hubei

Capacity: 60MW/120MWh
Function:Modulating Peak and Frequency,Smoothing Output



Energy Storage Project in Laohekou,Hubei

Capacity:60MW/120MWh
Function:Modulating Peak and Frequency,Smoothing Output



Energy Storage Project of China Power

Capacity:500KW/1000kWh
Function: Peak-shaving and Valley-filling,Solar Energy Storage+Charging



Solar Energy Storage & EV Charging Project in Lianzhuang ABB Park

Capacity:300KW/600kWh
Function:Peak-shaving and Valley-filling,Solar Energy Storage+Charging

Residential Solar Energy Storage & Charging Solutions



Wall-mounted / Floor-standing Residential Energy Storage Battery



Wall-mounted

Basic Parameter		
Energy (kWh)	5.76	7.68
DOD	90%DOD	90%DOD
Rated Voltage (V)	48DC	48DC
Voltage Range (V)	39-54DC	39-54DC
Max. Charging Voltage (V)	54DC	54DC
Dimensions (W * H * Dmm)	897×650×158	897×650×158
Weight (Kg)	78	82
Cooling method	Natural air-cooling	Natural air-cooling
Enclosure	IP65	IP65
Warranty	10 years	10 years
BMS Communication Interface	CAN/RS485	CAN/RS485

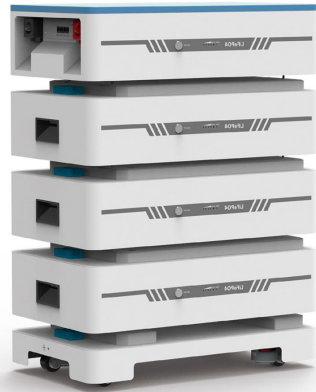


Floor-standing

Basic Parameter		
Energy (kWh)	13.5	14.5
DOD	90%DOD	90%DOD
Rated Voltage (V)	48DC	48DC
Voltage Range (V)	40.5~53.25DC	40.5~53.25DC
Max. Charging Voltage (V)	53.25DC	53.25DC
Dimensions (W*H*D mm)	490*251.3*832	490*251.3*832
Weight (kg)	116	125
Cooling Method	Natural cooling	Natural cooling
Enclosure	IP65	IP65
Warranty	10 years	10 years
BMS Communication Interface	CAN/RS485	CAN/RS485

Residential Solar Energy Storage & Charging Solutions

Low Voltage / High Voltage Stackable Residential Battery



Low Voltage



High Voltage

Basic Parameter

Model	XES51104	XES51208	XES51312	XES51416
Layers	1Layer	2Layer	3Layer	4Layer
Capacity(kWh)	5.3	10.6	15.9	21.2
Rated Voltage (V)	51.2			
Voltage Range (V)	40-60			
Max. Charging Voltage (V)	100			
Dimensions(W*H*Dmm)	680×400×430	680×400×592	680×400×754	680×400×916
Weight(Kg)	60	105	150	195
Cooling Method	Natural convection and fan cooling			
Enclosure	IP21 (indoor)			
BMS Communication Interface	CAN/RS485			

Basic Parameter

Model	XES20450-W	XES30750-W	XES40950-W	XES51250-W	XES61450-W
Layers	2Layer	3Layer	4Layer	5Layer	6Layer
Capacity(kWh)	10.24	15.36	20.48	25.6	30.72
Rated Voltage (V)	204.8	307.2	409.6	512	614.4
Voltage Range (V)	160-230.4	240-345.6	320-460.8	400-576	480-700.8
Max. Charging Voltage (V)	25				
Dimensions(W*H*Dmm)	760×430×570	760×430×720	760×430×870	760×430×1020	760×430×1170
Weight(Kg)	133	187	241	295	349
Cooling Method	Natural convection and fan cooling				
Enclosure	IP21 (indoor)				
BMS Communication Interface	RS485/WIFI				

Residential Solar Energy Storage & Charging Solutions

Rack-mounted

Residential Energy Storage Battery



Rack-mounted Energy Storage Battery

Basic Parameter

Nominal Energy (kWh)	5.12
Dimension (W*H*D mm)	461×420×134
Weight (Kg)	40
Life Cycle	6000+ @80%DOD @25°C at 0.5c
Nominal Voltage (V)	51.2
Operating Voltage Range (V)	43.2~58.4
Charge/Discharge Current (Recommend) (A)	50/50
Charge/Discharge Current (Maximum) (A)	100/100
Charge Temperature (°C)	-10~50
Discharge Temperature (°C)	-20~55
Storage Temperature (°C)	10~30
Communication Interface	CAN, RS485,RS232
Certification	UN38.3,IEC6261.9 ,MSDS, Sea Safety Transportation
Compatible Inverter	Voltronic/Megarevo/Deye/GOODWE/Growatt/SRNE/PionPower

Multi-functional Portable Air Compressor/ Jump Starter Air Lock/Jump Starter



Air Lock



Jump Starter

Basic Parameter

Model No	M18
Weight(kg)/lbs	0.42/0.93
Battery Capacity (mAh)	5000
USB Output (V)	5
Max.Pressure (Ps)	150
Dimension(mm)	205*75*60
Certificates	CE,FCC,ROHS
Warranty	12months
Inflatable Pressure Form	
Bicycle	12"-29" bicycle Tire/700c Road Bike 30-65 Psi/100-145 Psi
Car	Car Tire 2.2-2.5 Bar
Ball	Basketball, Football,Volleyball, American Football 4-16 Psi

Basic Parameter

Product Name	Portable Jump Starter
Type/Model	YC08
Nominal Voltage(V)	12
Rated Capacity(mAh)	7200
Recommended Charging Voltage(V)	5
Recommended Charging Current(mA)	900
Maximum Charging Current(mA)	1800
Maximum Discharging Current	USB port:1800mA
Dimensions(mm)	160*80*39
Weight(g)	340
Certificates	UN38.3,CE,ROHS,FCC UL62368
Warranty	12months

Residential Solar Energy Storage & Charging Solutions

American Standard (APP / Cloud control)

Portable EV Charger



Portable

Wall-mounted

	Basic Parameter (Portable)					Basic Parameter (Wall-mounted)						
Model	A01(US Version)	EFAC32FE11(EU Version)		EFAC16FE31(EU Version)		AC01(US Version)	EWAC16NE13(EU Version)	EWAC16NE33(EU Version)	EWAC32NE33(EU Version)			
Adapter	5-15P/N14-50P	EU-PLUG	323 Blue	EU-PLUG	165 Red	/	/	/	/			
Input Voltage(V)	120/240	230	230	230	400	240	230	400	400			
Output Current(A)	32A or 40 (Max)	13	32	13	16	50	32	16	32			
Max. Output Power(kW)	7.6 or 9.6	3	7.3	3	11	12	7	11	22			
Output Voltage(V)	100-250Volt AC single-phase	230	230/400		/	/	/	/	/			
Input Frequency(Hz)	50/60	50/60		50/60		50/60		50/60				
Charging Port Type	SAE J1772	IEC 62196 (Type2)		SAE J1772		IEC 62196		IEC 62196				
Total Length(m)	22ft (6.6)	20ft (6)		19.7ft (6) Charging handle Length		/		/				
Operating Temperature(°F)	22-122(-30°C-50°C)	22-122(-30°C-50°C)		-22-122(-30°C-50°C)		-22-122(-30°C-50°C)		-22-122(-30°C-50°C)				
Control Box Enclosure Type	NEMA 4 (IP66)	NEMA 4 (IP66)		NEMA-3R/IP65		NEMA-3R/IP65		NEMA-3R/IP65				
Cooling Method	Natural cooling											
Others Certification	FCC/FCC ID/Energy star		/		FCC/FCC-ID		ROHS		/			
Weight(kg)	/	/		5.1		4		4.6		5.1		
Warranty	2-year limited warranty				Control box: 5 years Charging handle: 2 years				/			
Installation Method	/				/				Wall-mounted			
Communication	/				/				Bluetooth/WIFI/Lan/4G			

Multiple Models

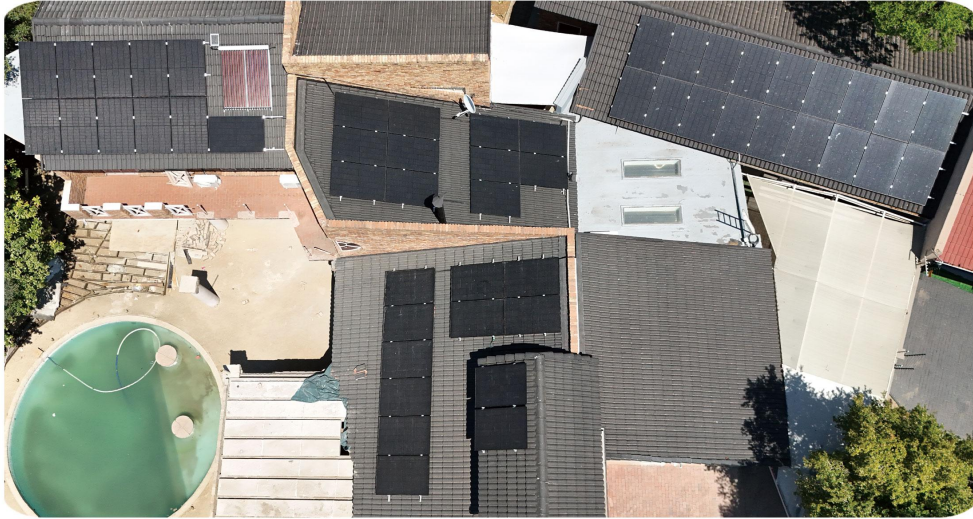
Portable Power Station



	Basic Parameter						
Model	P201	P302	E600	E1500	E3600	T4	Solar Panel
Nominal Capacity	148	296	614	1536	3072	6144/4096	/
Battery Type	18650	18650	LiFePO4	LiFePO4	LiFePO4	LiFePO4	/
Rated Power(W)	150 (Surge 300 1s)	300 (Surge 500 1s)	1200	2200	3600	4200	100
Charging Method	Mains,Solar	Mains/Solar/Car charging	Mains/Solar/Car charging	Mains/Solar/Car charging	Mains/Solar/Car charging	Mains/Solar/Car charging	/
Dimension(T*W*H mm)	170*105*115	215*150*205	298*199*215	377*237*305	441*312*350	570*350*515	1760*485*40(unfolding) 470*540*25(unfolding)
Weight(kg)	1.5kg	3kg	9.4KG/20.6lbs	18.2KG/40lbs	36KG/79.2lbs	61kg/134.5lbs	4.6
Discharge Temperature(°C)	0-40	0-40	-20~-45/-4°F-113°F	-20~-45/-4°F-113°F	-20~-45/-4°F-113°F	-20~-60/-4°F-140°F	-20-75
Certification	CE, FCC, ROHS						/
Warranty	2 years						

Residential Solar Energy Storage & Charging Solutions

Project Portfolio



Johannesburg, South Africa



Capacity: 22kW/54kWh



Hainan, China



Capacity: 5.5kW/11.52kWh



AnHui, China



Capacity: 11kW/27kWh



Manila metropolitan area, Philippines



Capacity: 15.4kW/27kWh

Lithium Battery for Off-road Vehicle & Truck



Power Supply for Truck Air Conditioner
Vehicle Power Supply

Basic Parameter	
Energy(kWh)	3.84
Operating Temperature	-30~60°C
Weight(kg)	≤35
Cycle	2000
Dimension(L*W*Hmm)	510×286×232
Anti-theft method	BDLP
Enclosure	IP67
Heating Method	Remote Reservation Heating
Remote Control	WeChat applet
Protocols	CAN
OTA Program Upgrade	Auto/Manual

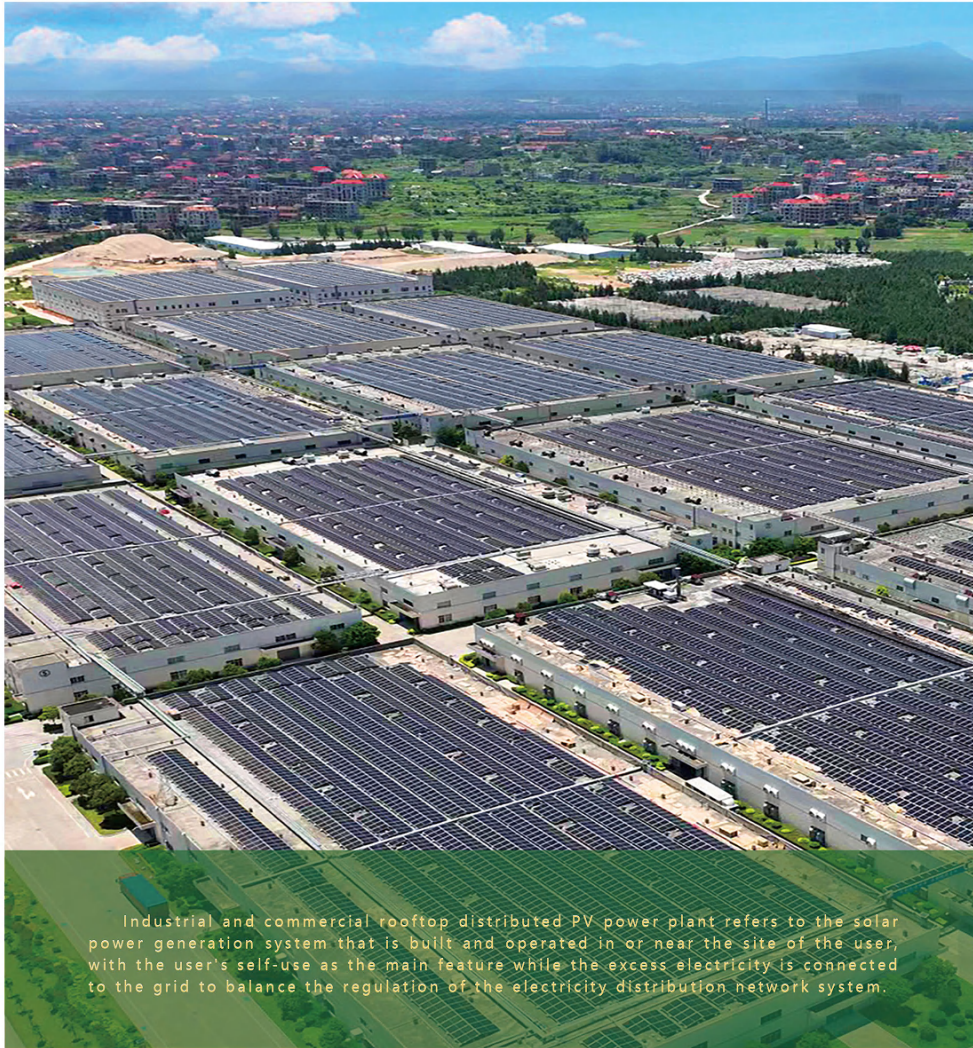


Replacement for Lead-acid Battery
Lithium Batteries for Off-Road Vehicle

Basic Parameter		
Nominal Voltage (V)	12.8	25.6
Nominal Capacity (Ah@C)	100@0.2	100@0.2
Nominal Energy (Wh)	1280	2560
Standard Charge Current (A)	50	50
Standard Discharge Current (A)	50	50
Max.Continuous Discharging (A)	100	100
Charge Temperature (°C)	0 to 45(32°F to 113°F) @60±25%Relative Humidity	
Discharge Temperature (°C)	-20 to 60(-4°F to 140°F) @60±25%Relative Humidity	
Storage Temperature (°C)	0 to 45(32°F to 113°F) @60±25%Relative Humidity	
Dimension (L*W*H mm)	330×174×222	520×237×220
Weight (kg)	10.9	21.7
Certifications	UL1642(Cell), IEC62133(Cell), IEC62619(Cell), CE(Cell), UN38.3(Cell/Pack), ROHS(Cell)	



Industrial & Commercial Rooftop Distributed PV Power Plant Solution



- **Fast Return:** The project construction cycle takes only 2-6 months, with cost recovery in 3-6 years and service life of more than 25 years
- **High Income:** A 10,000m² rooftop PV power plant generates about 1.5 million kWh annually with low cost of production and operation
- **Strong Guarantee:** As the leader of the solar industry, Xinyi has strong supply chain system, which guarantees the quality of construction work and progress

Project Portfolio



The rooftop distributed PV power plant of Huafeng Group



The rooftop distributed PV power plant of Oriental Yuhong in Puyang



The rooftop distributed PV power plant of Jiangsu Xunai



The rooftop distributed PV power plant of light rail transit station in Wuhu, Anhui Province



The rooftop distributed PV power at Malacca Industrial Park in Malaysia



The rooftop distributed PV power plant projects in Wuqing District, Tianjin & Minhua Industrial Park

PV Film Solutions



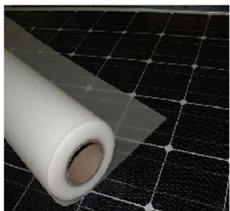
HT EVA XES-811& HC EVA XES-611
HTEVA XES-811&White EVA XES-611W/XES-921W

Film for Single Glass Modules

Xinyi EVA adhesive film is made of ethylene vinyl acetate copolymer with various necessary step-by-step additions, which plays the role of encapsulation in solar cell modules and has the following characteristics:

HT EVA XES-811& HC EVA XES-611:

- ◆ Good weather fastness, high temperature, humidity and UV resistance
- ◆ Excellent weather resistance, including high temperature, high humidity, UV protection, etc.
- ◆ Great light transmittance provides reliable quality assurance for packaging and solar energy conversion of modern solar panels
- ◆ Superior anti-white overflow ability, effectively solve the white overflow problem of the white adhesive film after the component lamination
- ◆ Maintains superior peel strength over time
- ◆ 2. Maintains superior peel strength over time
- ◆ Excellent PID resistance, anti-PID performance solves the water vapor intrusion problem of double-glass components to a certain extent
- ◆ High reflectance, increase module power by more than 0.5%



XES-811



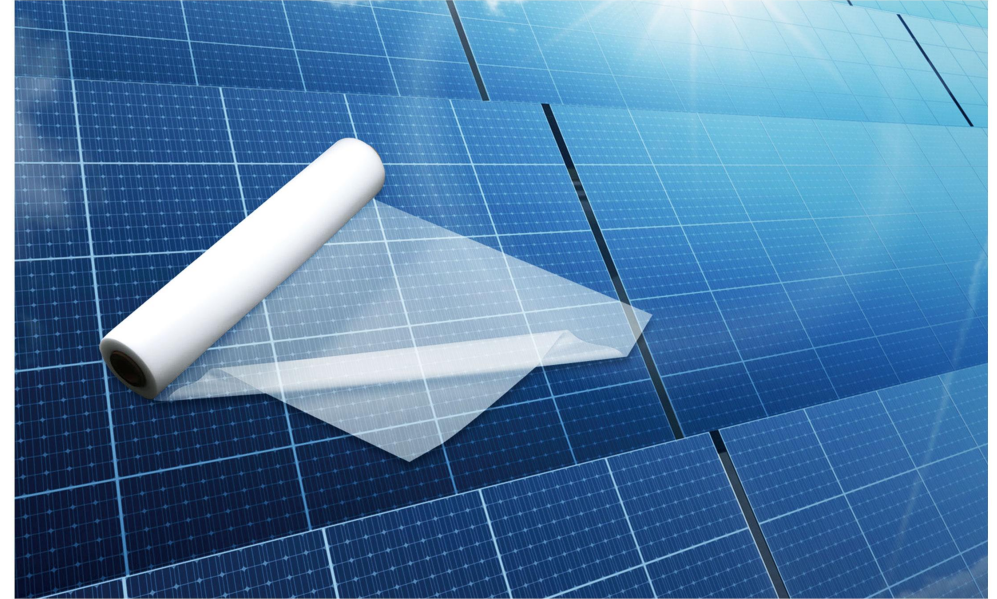
XES-611



XES-611W



XES-921W



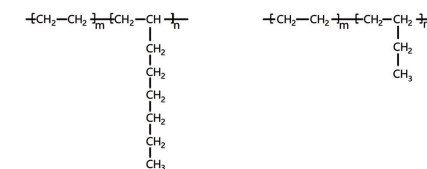
EVA+POE XES-P11/EPE XES-831

Film for G2G Bifacial Modules - EVA+POE/EPE

Xinyi POE/EPE film is ethylene-octylene/butene copolymer, and add with necessary auxiliaries with features as below.

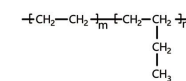
XES-P11 POE film for Bifacial Modules

- ◆ Higher volume resistivity effectively reduce the PID phenomenon, improve the use of components safety and reliability
- ◆ Excellent anti-PID performance solve the water vapor intrusion problem of double-glass components to a certain extent
- ◆ Lower water vapor transmittance ensure the safety and long-term aging resistance of the components in high temperature and humidity environment
- ◆ Maintains superior peel strength over time



Ethylene-octylene copolymer

XES-P11



Ethylene-butylene copolymer

XES-831 EPE film for Bifacial Modules

- ◆ Excellent anti-PID performance
- ◆ Excellent laminating window, no slip problem
- ◆ Excellent peeling strength, and long-term maintenance of excellent resistance to UV and wet heat aging ability



XES-831



Electric Forklift Solutions

48-80V

Lithium Battery Pack for Electric Forklift



Basic Parameter	
product name	48-80V, Lithium battery pack for forklift (support remote)
Voltage (V)	48-80
Nominal Capacity (Ah)	100-205
Charging Current (A)	100-200 (Optional)
Charging Time (h)	1.5-3
Utility Time (h)	5-7
Working temperature (°C)	-20~+55
Storage temperature (°C)	-20~+40
Dimension	Customizable (4.3-inch touch screen)

3.5T/4.5T

Four-wheel Electric Forklift



Basic Parameter		
Product Model	3.5T	4.5T
Drive unit	Electrics	
Rated load capacity (Kg)	3500	4500
Load center distance (mm)	500	
Standard lifting height (mm)	3000	
Tilt of mast/fork carriage forward/backward	6/12	6/10
Wheelbase (mm)	1622	2000
Total length (including pallet fork) (mm)	3620	4127
Total width (mm)	1220	1600
Height, mast extended (mm)	4105	4120
Load at maximum height (Kg)	3500	5000
Height of overhead guard (cabin) (mm)	2220	2353
Minimum turning radius (mm)	2300	2665
Walking speed (full load /unladen) (km / h)	11/12	14/14.5
Lift speed (full load / unladen) (mm / s)	230/370	260/450
Service weight include battery	5100	7600
Tyre type,driving wheels /steering wheels (4 wheels)	Solid rubber	
Driving wheel distance (mm)	1000	1112
Voltage / Capacity (V/Ah) (Lithium-iron phosphate battery)	80/410	80/510

Industrial Customization

- Specially customized lithium electric forklift, suitable for high strength, high frequency use of glass industry
- Special lithium electric forklift for heavy working condition industry, suitable for high intensity and high frequency working condition

25.6V

Lithium Battery Pack for Electric Pallet Truck



Basic Parameter	
Product Model	25.6V Lithium battery pack for forklift (support remote)
Voltage (V)	25.6
Nominal Capacity (Ah)	100-205
Charging Current (A)	50-100 (Optional)
Charging Time (h)	2-3
Utility Time (h)	6-8
Working temperature (°C)	-20~+55
Storage temperature (°C)	-20~+40
Dimension	Customizable

2T/3T

Electric Pallet Truck



Basic Parameter		
Product Model	2T	3T
Drive Unit	Electrics	
Rated Load (kg)	2000	3000
Overall Length (mm)	690/1930	
Overall Width (mm)	730	
Forklift Length (mm)	1150/1220	
Outside Width of Pallet Fork Width (mm)	600/685	
Minimum Turning Radius (mm)	1700	
Walking Speed (Full load) (km / h)	5.5	
Walking Speed (unladen) (km / h)	6	
Maximum Climbing Slope Full-load / unladen (%)	8/16	5/16
Voltage / Capacity (V / Ah) (Lithium-iron phosphate battery)	24/150	

Specialized In lithium Industry

- XES have full set of independent R&D and production line from battery module,BMS,pack to the integration of energy storage system
- Focus on lithium batteries solutions for electric forklift and electric pallet